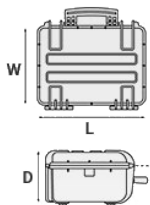


# Mod. 5823 B

COPOLYMER POLYPROPYLENE WATERPROOF CASE



METRIC MM-KG-C°



### INTERNAL DIMENSIONS

L LENGTH	580 mm
W WIDTH	440 mm
D DEPTH	220 mm
LID	60 mm
BASE	160 mm

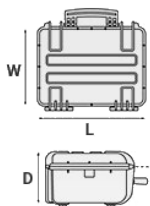
### EXTERNAL DIMENSIONS

L LENGTH	670 mm
W WIDTH	510 mm
D DEPTH	262 mm

### OTHER DATA

WEIGHT EMPTY	9.17 Kg
WEIGHT WITH FOAM	10.40 Kg
WEIGHT WITH CUSTOM FOAM	Kg
VOLUME	56.10 lt
BUOYANCY	36.70 Kg/max
OPERATING TEMPERATURE	°C min -33 / max +90

IMPERIAL IN-LBS-F°



### INTERNAL DIMENSIONS

L LENGTH	22 13/16 in
W WIDTH	17 5/16 in
D DEPTH	8 11/16 in
LID	2 3/8 in
BASE	6 5/16 in

### EXTERNAL DIMENSIONS

L LENGTH	26 3/8 in
W WIDTH	20 1/16 in
D DEPTH	10 5/16 in

### OTHER DATA

WEIGHT EMPTY	20.21 lbs
WEIGHT WITH FOAM	22.92 lbs
WEIGHT WITH CUSTOM FOAM	0 lbs
VOLUME	14.79 gal
BUOYANCY	80.90 lbs/max
OPERATING TEMPERATURE	°F min -27.4 / max +194

## FEATURES



**CORROSION PROOF METAL HINGES WITH LID STAY FEATURES**



**SEALING O-RING**  
(Art. NEOSEAL + nr. art.)



**SOFT GRIP RUBBER HANDLE**

Asa de carga comprobada, reforzada con pasadores de acero a prueba de corrosión



**TWO MAN LIFT SIDE HANDLES**



**SELF OILING FREE RUNNING WHEELS**



**WHEELS AND TELESCOPIC HANDLE (model 5823)**



**JAM FREE LATCHES WITH EASY-OPENING MECHANISM**  
(from model 3818 on)



**INTERNAL SLOTS**  
Internal slots for optional panel mounting brackets or panel mounting rings



### PVC WATERPROOF I. D. REMOVABLE LABEL

(Art. LABELCOVER + nr. art.)



### MANUAL PRESSURE RELEASE VALVE

The internal stop ring prevents valve from being completely extracted (Art. PURGEVALVE.B)

## ACCESSORIES



### PROTECTIVE SLEEVE FOR PC 13'-13.3''''

TOP ENVELOPE 13

Protective padded notebook sleeve. Protects the laptop from shocks and scratches.



OPTIONAL  
TOP COVERS  
AVAILABLE  
FOR LARGER  
MODELS

COVERCHI  
OPZIONALI  
PER I  
MODELLI  
PIU' GRANDI

### TOP COVER FOR DIV58-DIV58.1 AND DIV58.2

COV58

Top covers available for larger models: they can be easily fixed on the dividers by Velcro strips. Ideal to protect and keep items in place.



### PADDED DIVIDER FOR 5822-5823-5833

DIV58

Padded dividers with internal adjustable partitions. Ideal to protect and transport any kind of sensitive equipment. Thanks to their modularity, they can be easily combined.



### PADDED BAG WITH ADJUSTABLE DIVIDERS

BAG-G

Highly durable padded bag with rubber coated handle and robust zipper with lockable Velcro pull zipper. Practical external front pouch for documents, removable shoulder strap and rubber feet on the bottom to grant better grip.

Internal adjustable padded dividers for flexible configuration.

Ideal to protect sensitive equipment (ie electronic, photographic, broadcasting, medical etc.).

Suitable for cases 5822, 5823 and 5833.

Color: black.



### LID PANEL WITH ORGANIZED POUCHES

PANEXPL58

Practical and robust lid panel with pouches, ideal for small accessories and documents. Suitable for cases 5822, 5823 and 5833.

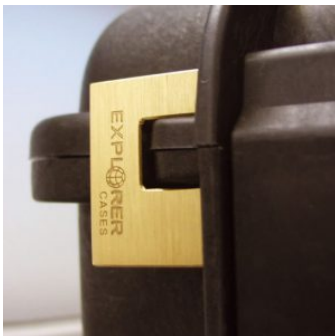
Color: black.



### CONVOLUTED FOAM SET FOR CASE 5822, 5823 AND 5833

LIDFOAM.58

(includes 2 pcs.)



### PATENTED HEAVY DUTY BRASS PADLOCK WITH KEYS

EXPL PADLOCK

Designed to fit snug to the Explorer case mould so as not to swing out



### PATENTED COMBINATION PADLOCK

EXPL COMBILOCK

Designed to fit snug to the Explorer case mould so as not to swing out



### BLIND INSERT

KIT.EXPL.PLUGS

Kit includes 6 pcs.

Whenever the slots are not going to be used for in-built applications, those can be closed by blind inserts that will give the case a better and finished interior look.



### TSA APPROVED PADLOCK WITH COMBINATION

EXPL TSA.DIGILOCK

The new TSA approved padlocks allow tsa® airport security agents to open the case without destroying the lock. TSA agents are trained to recognize the travel sentry certified logo and should not break the case lock.



### METAL BRACKET

KIT SUPP.EXPL.

Kit includes 6 pcs.

All models (except for the 1908) are internally equipped with specific slots, to apply the optional metal or plastic brackets which provide either a panel's fixing points or a fix mechanical joint inside the case, to build more complete applications. This way the case becomes a real workstation, rather than just a carrying container. As the panel mounting brackets are mechanically fixed by screws, they can be removed when necessary. The dedicated screws allow the case to remain waterproof, and help the panels to be removed easily and quickly



### PLASTIC BRACKET

KIT SUPP.PLAST.

Kit includes 6 pcs.

All models (except for the 1908) are internally equipped with specific slots, to apply the optional metal or plastic brackets which provide either a panel's fixing points or a fix mechanical joint inside the case, to build more complete applications. This way the case becomes a real workstation, rather than just a carrying container. As the panel mounting brackets are mechanically fixed by screws, they can be removed when necessary. The dedicated screws allow the case to remain waterproof, and help the panels to be removed easily and quickly



## FOAM SET FOR CASE 5822 AND 5823

FOAM.5822

Layers of pre cubed foam for the bottom and convoluted foam for the lid



## SPARE PARTS



### Side handle for models 5140 - 5325 - 5326 - 5822 - 5823 - 5833 - 7630 - 13513 - 13527 - 10840

KIN.0412

Includes:

- 1 black handle
- 2 fixing pins



### Rubber coated handle for models 4820-5325-5326-5822-5823-5833

KIN.0542

Includes:

- 1 black handle
- 2 fixing pins



### Name tag holder for models from 2712 up

KIN.0496

Includes:

- 1 transparent name tag holder



### Easy-opening latch for models from 3818 up

KIN.0446

Includes:

- 1 black latch
- 1 fixing pin



### Wheels for models 5823, 5833, 5326 and 7630

KIN.0522

Includes:  
2 self-oiling wheels  
4 metal washers  
2 snap rings (Seeger)  
2 fixing pins



### Feet for models 5326 and 5823

KIN.0526

Includes:  
2 black feet  
2 fixing pins  
2 metal washers  
2 snap rings (Seeger)



### Extractable handle + wheels for models 5822-5823-5833

KIN.0550

Includes:  
1 black extractable handle  
1 black protective cover  
1 metal spring  
1 lock/unlock lever  
1 small cover cap  
4 fixing pins  
4 metal washers  
4 snap rings (Seeger)  
2 self-oiling wheels  
12 fixing screws



### Polyurethane o-ring seal for models 5822, 5823 and 5833

KIN.0853

Includes:  
1 o-ring



### Manual pressure release valve for models from 2712 up

KIN.0495

Includes:

- 1 black purge valve (+ o-ring + pin)
- 1 threaded bush
- 1 snap ring (Seeger)



### EPDM extruded o-ring seal for models 5822, 5823 and 5833

KIN.0530

Includes:

- 1 o-ring