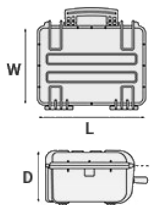


Mod. 2712 B

COPOLYMER POLYPROPYLENE WATERPROOF CASE



METRIC MM-KG-C°



INTERNAL DIMENSIONS

L LENGTH	276 mm
W WIDTH	200 mm
D DEPTH	120 mm
LID	35 mm
BASE	85 mm

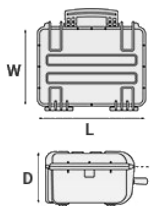
EXTERNAL DIMENSIONS

L LENGTH	305 mm
W WIDTH	270 mm
D DEPTH	144 mm

OTHER DATA

WEIGHT EMPTY	1.62 Kg
WEIGHT WITH FOAM	1.83 Kg
WEIGHT WITH CUSTOM FOAM	Kg
VOLUME	6.60 lt
BUOYANCY	4.20 Kg/max
OPERATING TEMPERATURE	°C min -33 / max +90

IMPERIAL IN-LBS-F°



INTERNAL DIMENSIONS

L LENGTH	10 7/8 in
W WIDTH	7 7/8 in
D DEPTH	4 3/4 in
LID	1 3/8 in
BASE	3 3/8 in

EXTERNAL DIMENSIONS

L LENGTH	12 in
W WIDTH	10 5/8 in
D DEPTH	5 11/16 in

OTHER DATA

WEIGHT EMPTY	3.57 lbs
WEIGHT WITH FOAM	4.03 lbs
WEIGHT WITH CUSTOM FOAM	lbs
VOLUME	1.58 gal
BUOYANCY	9.25 lbs/max
OPERATING TEMPERATURE	°F min -27.4 / max +194

FEATURES



CORROSION PROOF METAL HINGES WITH LID STAY FEATURES



LID CAN BE SET TO SLIDE-OFF

By releasing the back screw, lid becomes set to slide-off when opened at 70°



SEALING O-RING

(Art. NEOSEAL + nr. art.)



LATCH



INTERNAL SLOTS

Internal slots for optional panel mounting brackets or panel mounting rings



COUNTERBALANCE SUPPORTS

(in certain models)



PVC WATERPROOF I. D. REMOVABLE LABEL

(Art. LABELCOVER + nr. art.)



MANUAL PRESSURE RELEASE VALVE

The internal stop ring prevents valve from being completely extracted (Art. PURGEVALVE.B)



MADE IN ITALY

ACCESSORIES



PROTECTIVE SLEEVE FOR PC 13'-13.3'''

TOP ENVELOPE 13

Protective padded notebook sleeve. Protects the laptop from shocks and scratches.



PADDED DIVIDER FOR 2712

DIV2712

Padded dividers with internal adjustable partitions. Ideal to protect and transport any kind of sensitive equipment. Thanks to their modularity, they can be easily combined.



PADDED BAG WITH ADJUSTABLE DIVIDERS

BAG-R

Highly durable padded bag with rubber coated handle and robust zipper with lockable Velcro pull zipper. Practical external front pouch for documents, removable shoulder strap and rubber feet on the bottom to grant better grip.

Internal adjustable padded dividers for flexible configuration.

Ideal to protect sensitive equipment (ie electronic, photographic, broadcasting, medical etc.).

Suitable for case 2712.

Color: black.



LID PANEL WITH ORGANIZED POUCHES

PANEXPL27

Practical and robust lid panel with pouches, ideal for small accessories and documents.

Suitable for cases 2712 and 2717.

Color: black.



FOAM SET FOR CASE 2712

FOAM.2712

Layers of pre cubed foam for the bottom and convoluted foam for the lid



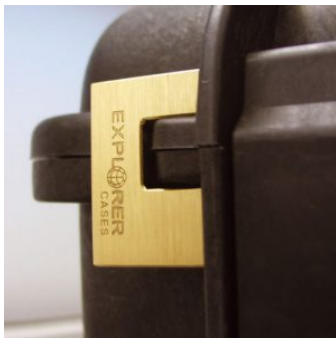
PANEL RING FOR CASE 2712 AND 2717

PANRING27.USA

Includes Imperial system fixing screws.

User friendly panel frames, they can be used to fix several kind of panels, from plastic to aluminum ones. Equipped with an additional gasket (which will be squeezed in between the panel and the frame) they can provide the case with a perfect instrumentation surface and a further humidity and dust resistance when the case is used in the field.

Completely removable, resistant and light, these panel rings help to transform the Explorer cases into practical workstations.



PATENTED HEAVY DUTY BRASS PADLOCK WITH KEYS

EXPL PADLOCK

Designed to fit snug to the Explorer case mould so as not to swing out



PATENTED COMBINATION PADLOCK

EXPL COMBILOCK

Designed to fit snug to the Explorer case mould so as not to swing out



BLIND INSERT

KIT.EXPL.PLUGS

Kit includes 6 pcs.

Whenever the slots are not going to be used for in-built applications, those can be closed by blind inserts that will give the case a better and finished interior look.



TSA APPROVED PADLOCK WITH COMBINATION

EXPL TSA.DIGILOCK

The new TSA approved padlocks allow tsa® airport security agents to open the case without destroying the lock. TSA agents are trained to recognize the travel sentry certified logo and should not break the case lock.



METAL BRACKET

KIT SUPP.EXPL.

Kit includes 6 pcs.

All models (except for the 1908) are internally equipped with specific slots, to apply the optional metal or plastic brackets which provide either a panel's fixing points or a fix mechanical joint inside the case, to build more complete applications. This way the case becomes a real workstation, rather than just a carrying container. As the panel mounting brackets are mechanically fixed by screws, they can be removed when necessary. The dedicated screws allow the case to remain waterproof, and help the panels to be removed easily and quickly



PLASTIC BRACKET

KIT SUPP.PLAST.

Kit includes 6 pcs.

All models (except for the 1908) are internally equipped with specific slots, to apply the optional metal or plastic brackets which provide either a panel's fixing points or a fix mechanical joint inside the case, to build more complete applications. This way the case becomes a real workstation, rather than just a carrying container. As the panel mounting brackets are mechanically fixed by screws, they can be removed when necessary. The dedicated screws allow the case to remain waterproof, and help the panels to be removed easily and quickly

CONVOLUTED FOAM SET FOR CASE 2712 AND 2717

LIDFOAM.27

(includes 2 pcs.)



PANEL RING FOR CASE 2712 AND 2717

PANRING27

Includes Metric system fixing screws.

User friendly panel frames, they can be used to fix several kind of panels, from plastic to aluminum ones. Equipped with an additional gasket (which will be squeezed in between the panel and the frame) they can provide the case with a perfect instrumentation surface and a further humidity and dust resistance when the case is used in the field.

Completely removable, resistant and light, these panel rings help to transform the Explorer cases into practical workstations.

SPARE PARTS



Polyurethane o-ring seal for models 2712 and 2717

KIN.0847

Includes:
1 o-ring



Name tag holder for models from 2712 up

KIN.0496

Includes:
1 transparent name tag holder



EPDM extruded o-ring seal for models 2712 and 2717

KIN.0538

Includes:
1 o-ring



Latch for models from 2712 to 3317

KIN.0439

Includes:
1 black latch
1 fixing pin



Manual pressure release valve for models from 2712 up

KIN.0495

Includes:

- 1 black purge valve (+ o-ring + pin)
- 1 threaded bush
- 1 snap ring (Seeger)



Handle for model from 2712 to 3317

KIN.0475

Includes:

- 1 black handle
- 2 fixing pins